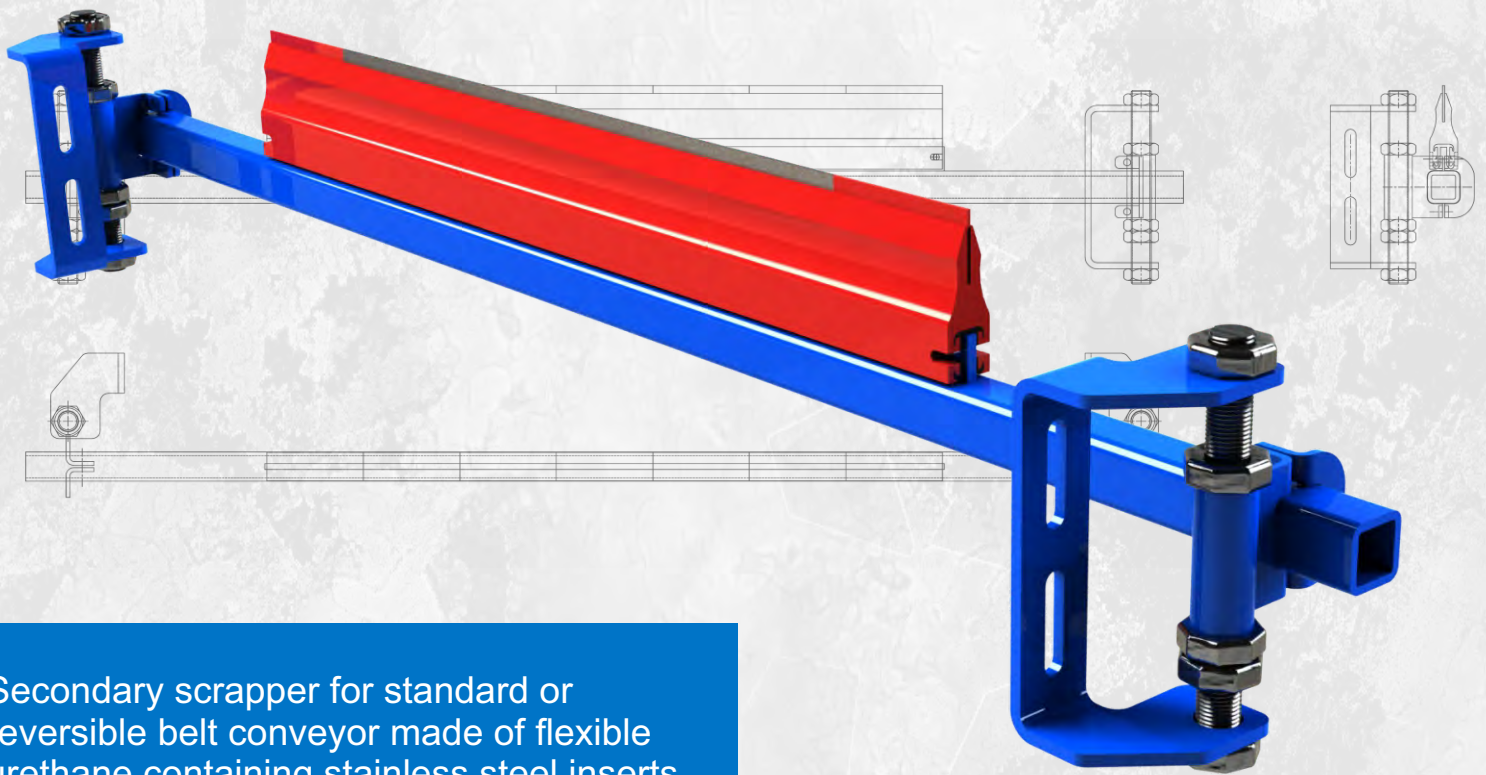


SECONDARY BELT SCRAPER FOR STANDARD OR REVERSIBLE CONVEYOR



Secondary scrapper for standard or reversible belt conveyor made of flexible urethane containing stainless steel inserts for an excellent cleaning.

Secondary scrapper to clean fines left by a primary scrapper. Usually installed underneath the head pulley inside the discharge chute.

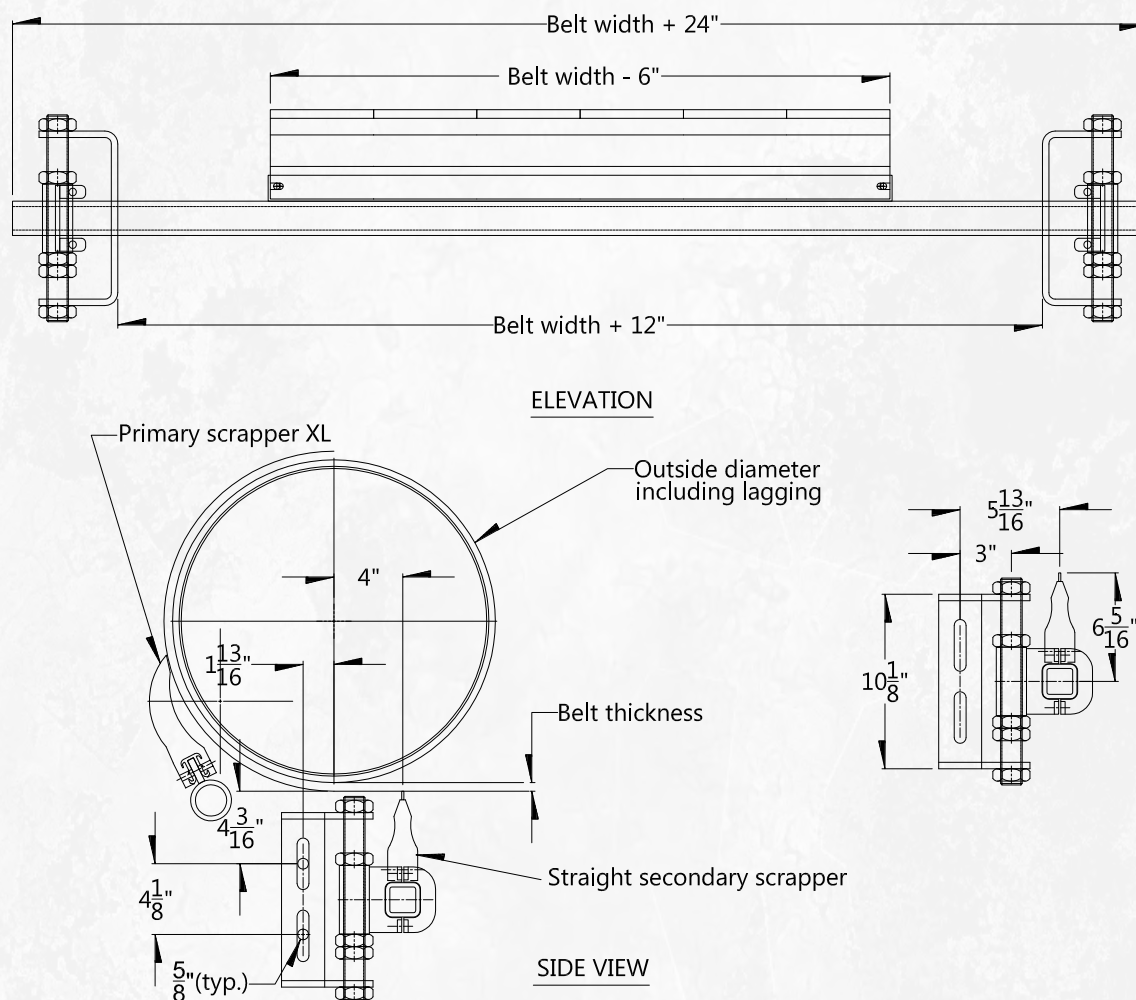
Supplied with an heavy duty support for a very precise positioning of the blade with the belt. All the tensionner parts are powder coated for an extended life of the system.

Can be installed perpendicularly or diagonally on a reversible conveyor as per your needs.

The blade is easily replaceable by using a reusable pin.

Available for differents belt width from 18 to 72 inches wide.

DIMENSIONS AND INSTALLATION:



TO ORDER :

PSR- xx - S

Where:

xx : Belt width (inches)

S : Optionnal support

TO BE INSTALLED WITH
PLASTHANE XL PRIMARY
SCRAPPER

