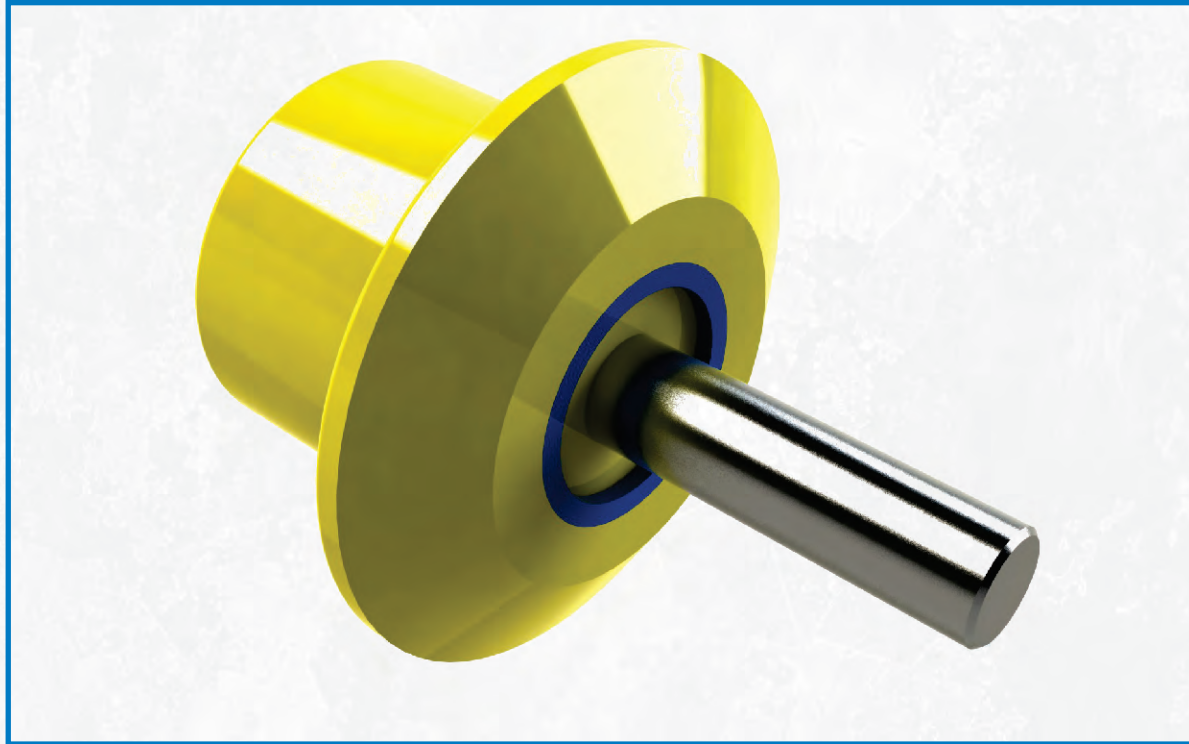


# PLASTHANE BELT WALL RETURN ROLLS



Heavy duty return rolls for beltwall conveyor. Made of duro 90 urethane to avoid damage to the belt while being strong enough to avoid shaft bending.



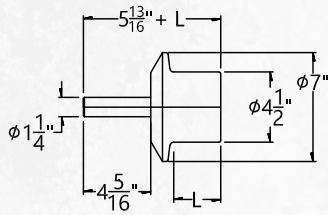
**Sturdy construction using two sealed bearings mounted on 1 1/4" steel or stainless steel shaft. Optional threaded or extended shaft are available.**

**Can be customized to fit different support length depending on the recessed dimension of the beltwall**

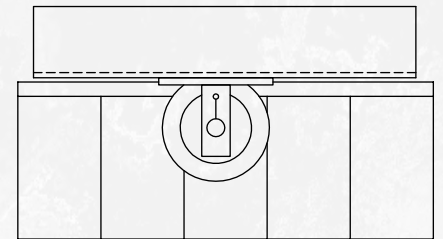
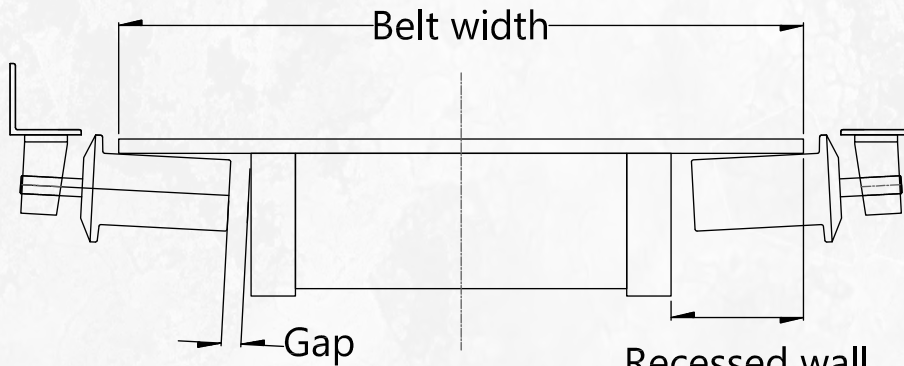
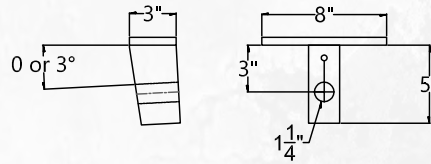
**Optional sturdy steel supports are offered to fit 0 or 3 degrees angle requested by beltwall manufacturer on the return side of the belt.**

## DIMENSIONS

Typical roll



Optional support



## TO ORDER

RRFW115-X

Where X is dimension L in mm

## TYPICAL APPLICATION

